

Cable-Extension Position Transducer

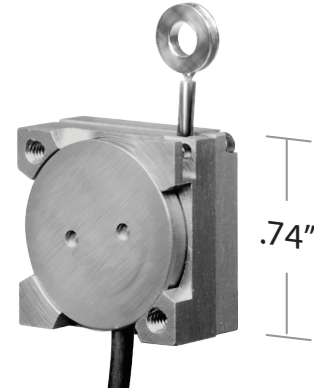
World's Smallest Stringpot

Range: 0-1.5 inches

High-Cycle • Space-Critical Applications



M150



Specification Summary:

GENERAL

Full Stroke Range.....	0-1.5 inches
Output Signal Options.....	voltage divider (potentiometer)
Accuracy.....	± 1% full stroke
Resolution.....	essentially infinite
Measuring Cable.....	.014-inch dia. nylon-coated stainless steel
Measuring Cable Tension.....	.4 oz. ±25%
Enclosure Material.....	anodized aluminum
Sensor.....	conductive plastic precision potentiometer
Potentiometer Cycle Life.....	5 million cycles
Weight.....	0.5 oz. max.

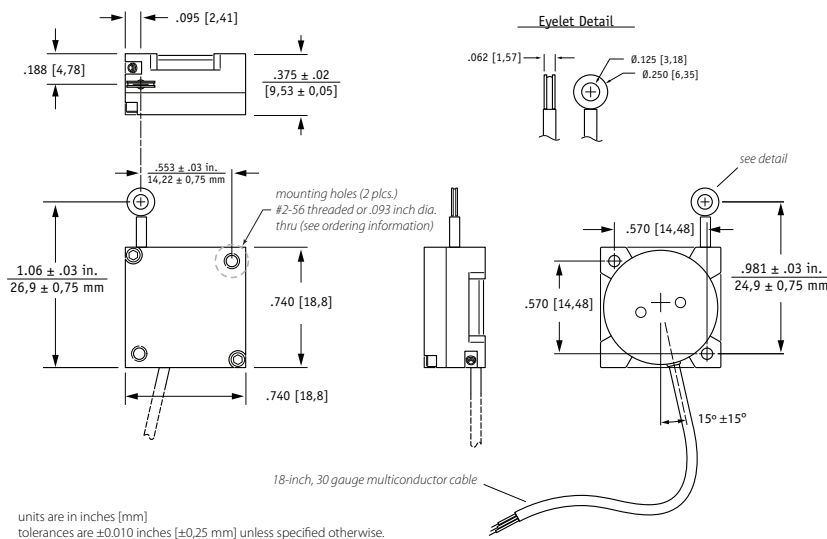
ELECTRICAL

Input Resistance.....	5K ±10% ohms
Recommended Output Signal Current.....	< 1µA
Recommended Maximum Input Voltage.....	20 VDC
Output Signal Change Over Full Stroke Range.....	94% ±4% of input voltage

ENVIRONMENTAL

Enclosure.....	NEMA 12, IP 50
Operating Temperature.....	-40° to 185°F (-40° to 85°C)
Temp. Coefficient of Sensing Element.....	.0028%/°F (.005%/°C)
Vibration.....	up to 10 G's at 30 to 2000 Hz max.

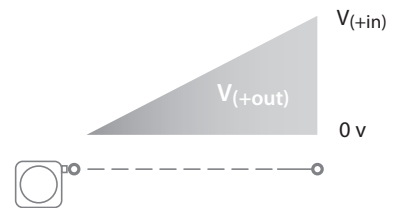
Outline Drawing



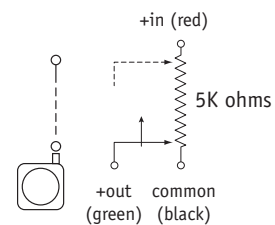
Introducing the world's smallest stringpot. The M150 is smaller than a thumbprint and occupies a tiny space of only .74 x .74 x .38 inches. With a full stroke measurement range of 1.5 inches, the M150 has been designed for many aerospace and automotive space-critical test applications such as throttle position and crash-test instrumentation.

The heart of the M150 is a precision high-cycle conductive plastic potentiometer that delivers a high-linearity voltage position feedback signal. With its rugged all aluminum construction, the M150 has been engineered for reliability and to provide quick, easy and hassle-free installation.

Output Signal



Electrical Connection



Celeco Transducer Products, Inc.
 20630 Plummer Street • Chatsworth, CA 91311
 tel: 800.423.5483 • +1.818.701.2750 • fax: +1.818.701.2799

celesco
 celesco.com • info@celesco.com

Ordering Information:

Model Number:

M150 - 4 - - - 5K - C1
order code: **A** **B**

Sample Model Number:

M150 - 4 - H1 - E - 5K - C1

A mounting hole style: .093 inch dia. thru
B measuring cable termination: eyelet

Mounting Hole Style:

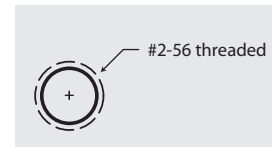
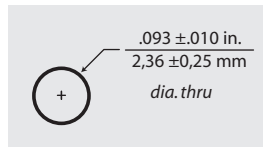
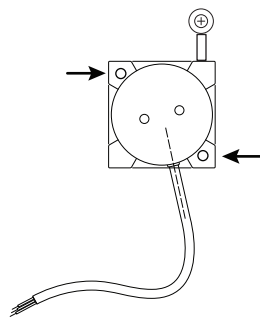
A *order code:*

H1

.093 thru

H2*

threaded



*-includes: 4) #2-56 x 3/8" pan head mounting screws with washers

Measuring Cable Termination:

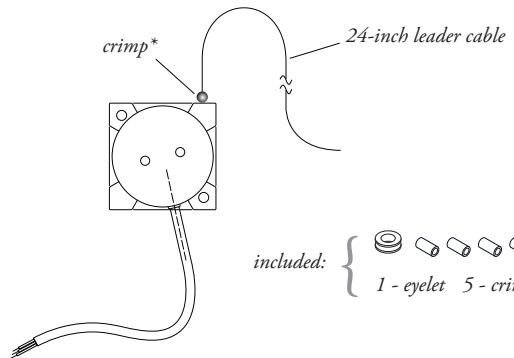
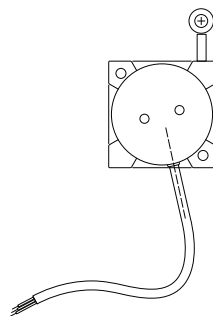
B *order code:*


E

Eyelet

L

Leader Cable



included: { 
 1 - eyelet 5 - crimps

*note: crimped stop prevents leader cable from retracting into sensor body