

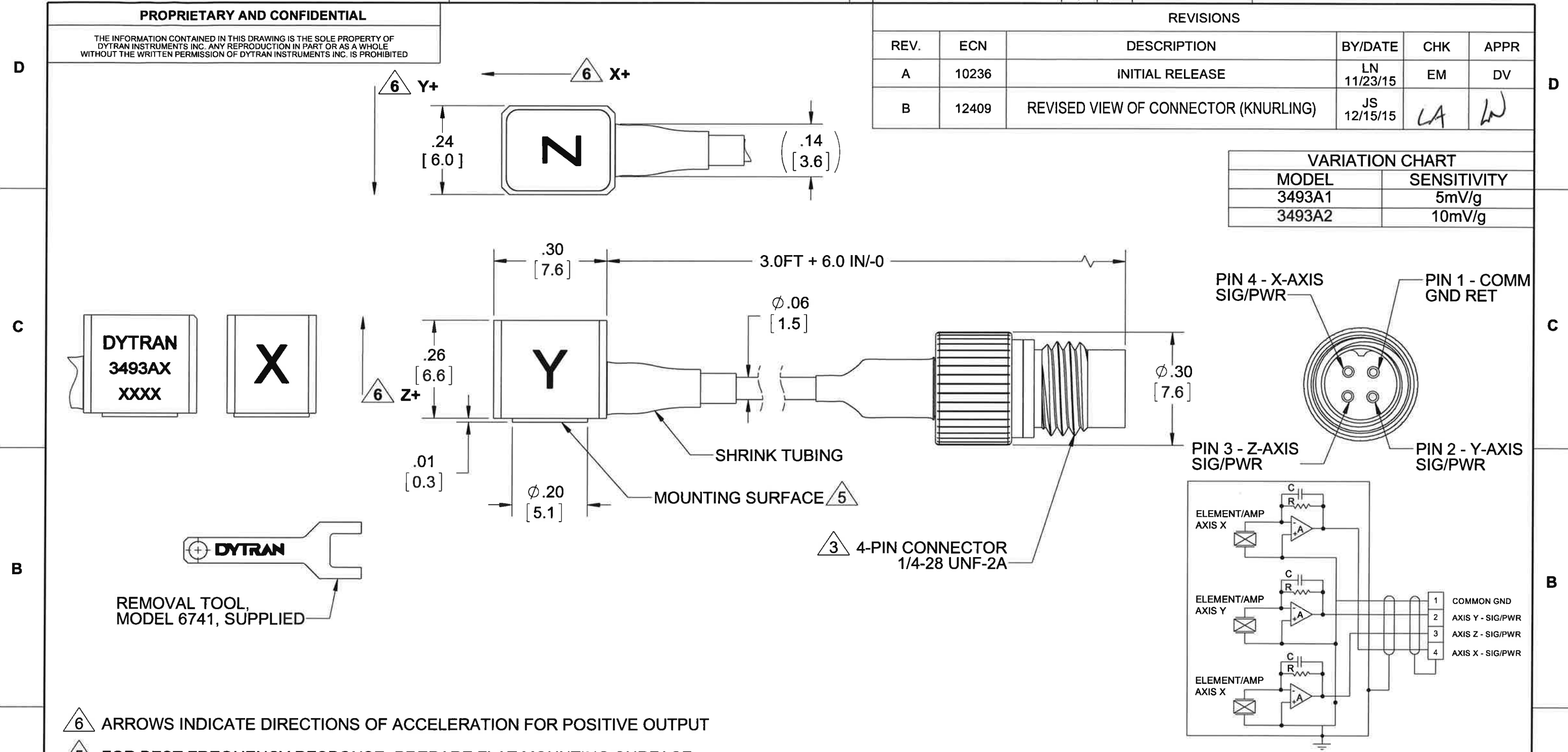
PROPRIETARY AND CONFIDENTIAL

THE INFORMATION CONTAINED IN THIS DRAWING IS THE SOLE PROPERTY OF DYTRAN INSTRUMENTS INC. ANY REPRODUCTION IN PART OR AS A WHOLE WITHOUT THE WRITTEN PERMISSION OF DYTRAN INSTRUMENTS INC. IS PROHIBITED

REVISIONS

REV.	ECN	DESCRIPTION	BY/DATE	CHK	APPR
A	10236	INITIAL RELEASE	LN 11/23/15	EM	DV
B	12409	REVISED VIEW OF CONNECTOR (KNURLING)	JS 12/15/15	LA	W

VARIATION CHART	
MODEL	SENSITIVITY
3493A1	5mV/g
3493A2	10mV/g



- 6 ARROWS INDICATE DIRECTIONS OF ACCELERATION FOR POSITIVE OUTPUT
- 5 FOR BEST FREQUENCY RESPONSE, PREPARE FLAT MOUNTING SURFACE Ø.20 [5.1] MIN, FLAT TO .001 TIR. APPLY ONE DROP OF CYANOACRYLATE ADHESIVE TO MOUNT THE ACCELEROMETER.

- 4. MODEL 6298, PETRO MOUNTING WAX IS SUPPLIED
- 3 MATING CABLES ARE MODELS 6824AXX (SANTOPRENE) OR 6811AXX (TEFLON).
- 2. HOUSING MATERIAL: TITANIUM ALLOY.
- 1. WEIGHT, LESS CABLE: 0.9 GRAMS, MAX.

NOTES: UNLESS OTHERWISE SPECIFIED

UNLESS OTHERWISE SPECIFIED: INTERPRET DIM & TOL PER ASME Y14.5M - 1994. REMOVE BURRS. COUNTERSINK INTERNAL THDS 90° TO MAJOR DIA. CHAM EXT THDS 45° TO MINOR DIA. THD LENGTHS AND DEPTHS ARE FOR MIN FULL THDS. DIMENSIONS APPLY AFTER FINISHING.

UNLESS OTHERWISE SPECIFIED: DIMENSIONS ARE IN INCHES DIMENSIONS IN BRACKETS [] ARE IN MILLIMETERS TOLERANCES ARE:

DECIMALS	METRIC	ANGLES
.XX ±.03	.X ± 0.8	±1°
.XXX ±.010	.XX ±0.25	

APPROVALS: ORIG LN 05/21/13, CHK EM 11/25/15, APP DV 11/25/15

DATE: 05/21/13, 11/25/15

63

ALL MACHINED SURFACES. TOTAL RUNOUT WITHIN .005. BREAK SHARP EDGES .005 TO .010. MACHINED FILLET RADII .005 TO .015. WELDING SYMBOLS PER AWS A2.4. ABBREVIATIONS PER MIL-STD-12.

THIRD ANGLE PROJECTION USA

DO NOT SCALE DRAWING

DYTRAN MASTER INSTRUMENTS, INC. Chatsworth, CA ONLY IF IN RED

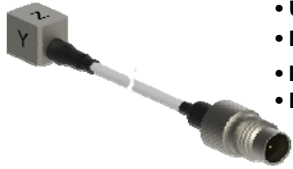
TITLE: **OUTLINE/INSTALLATION DWG, MODEL 3493A**

SIZE **B** CAGE CODE **2W033** DWG NO **127-3493A** REV **B**

SCALE: 4:1 SHEET 1 OF 1

Accelerometer, Triaxial, IEPE

REV A, ECN 10236, 11/23/15



- **ULTRA MINIATURE SIZE**
- **HIGH SENSITIVITY**
- **IDEAL LOW FREQUENCY RESPONSE**
- **LOW NOISE**

PHYSICAL

Weight, Max. (Less Cable)
Mounting
Integral Cable Length
Type
Connector Type
Housing Material
Isolation
Sensing Element Material
Mode

ENGLISH		SI	
0.03	oz	0.9	grams
Adhesive		Adhesive	
3	ft	914.4	mm
TFE		TFE	
4-pin		4-pin	
Titanium		Titanium	
Case Ground		Case Ground	
Ceramic		Ceramic	
Shear		Shear	

PERFORMANCE

Sensitivity [1], ±15%
Acceleration Range
Frequency Range ±5%
±10%
Resonance Frequency
Linearity [2]
Transverse Sensitivity
Bias Voltage
Output Impedance
Discharge Time Constant
Noise floor
Spectral Noise 1Hz
10Hz
100Hz
1000Hz
10000Hz

10	mV/g	1.0	mV/m/s ²
500	Gpeak	4905	m/s ² peak
1 to 5,000	Hz	1 to 5,000	Hz
1 to 10,000	Hz	1 to 10,000	Hz
>30	kHz	>35	kHz
±1	%	±1	%
<6	%	<6	%
+11 to +13	VDC	+11 to +13	VDC
100	Ω	100	Ω
0.2 to 1.0	seconds	0.2 to 1.0	seconds
0.005	Grms	0.05	m/s ² rms
1000	μGrms/sqr(Hz)	9810	μm/s ² rms/sqr(Hz)
500	μGrms/sqr(Hz)	4905	μm/s ² rms/sqr(Hz)
125	μGrms/sqr(Hz)	1226	μm/s ² rms/sqr(Hz)
60	μGrms/sqr(Hz)	589	μm/s ² rms/sqr(Hz)
25	μGrms/sqr(Hz)	245	μm/s ² rms/sqr(Hz)

ENVIRONMENTAL

Shock
Vibration
Operating Temperature
Seal
Magnetic Sensitivity at 100 Gauss
Base Strain

3,000	Gpeak	29430	m/s ²
900	Gpeak	8829	m/s ²
-55 to +225	°F	-48 to 107	°C
Epoxy		Epoxy	
0.00004	g/Gauss	0.00039	m/s ² /Gauss
0.15	g/με	1.47	m/s ² /με

POWER

Compliance Voltage
Current Range [3]

+18 to +30	VDC	+18 to +30	VDC
2 to 20	mA	2 to 20	mA

This family also includes:

Model	Sensitivity (mV/g)	Range (Gpeak)	Time Constant (Sec)	Operating Temp (°F)
3493A1	5	1,000	0.2 to 1.0	-55 to +225

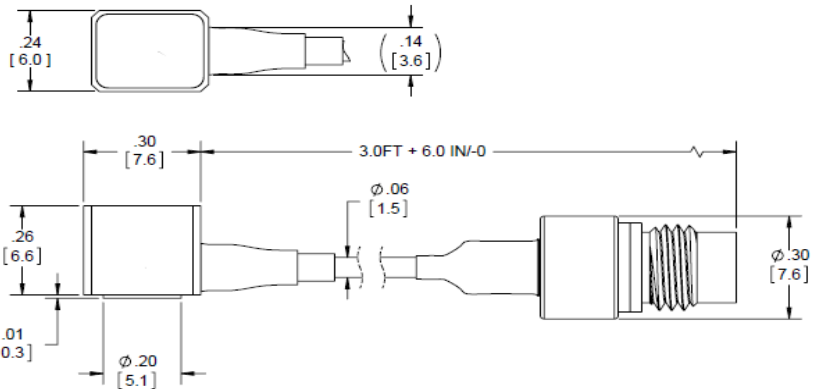
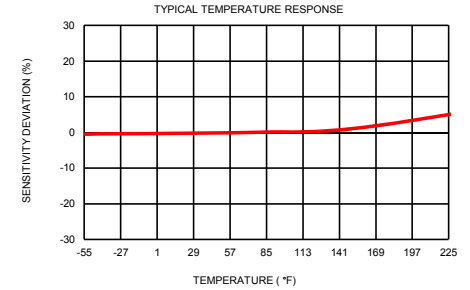
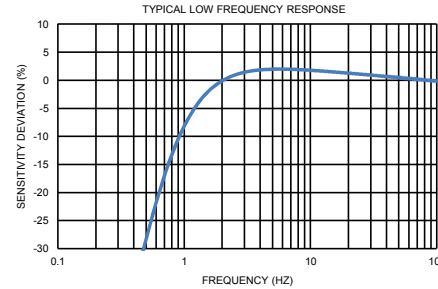
Refer to the performance specifications of the products in this family for detailed description

Supplied Accessories:

- 1) Accredited calibration certificate (ISO 17025)
- 2) Model 6298 small petro wax
- 3) Model 6741 removal tool

Notes:

- [1] Measured at 100Hz, 1 Grms per ISA RP 37.2.
- [2] Measure using zero-based straight line method, % of F.S. or any lesser range.
- [3] Do not apply power to this system without current limiting, 20 mA MAX. To do so will destroy the IC charge amplifier.
- [4] In the interest of constant product improvement, we reserve the right to change specifications without notice.



Units on the line drawing are in inches, units in brackets are in millimeters. Refer to 127-3493A for more information.



21592 Marilla Street, Chatsworth, California 91311 Phone: 818.700.7818 Fax: 818.700.7880 www.dytran.com
For permission to reprint this content, please contact info@dytran.com