

PROPRIETARY AND CONFIDENTIAL

THE INFORMATION CONTAINED IN THIS DRAWING IS THE SOLE PROPERTY OF DYTRAN INSTRUMENTS INC. ANY REPRODUCTION IN PART OR AS A WHOLE WITHOUT THE WRITTEN PERMISSION OF DYTRAN INSTRUMENTS INC. IS PROHIBITED

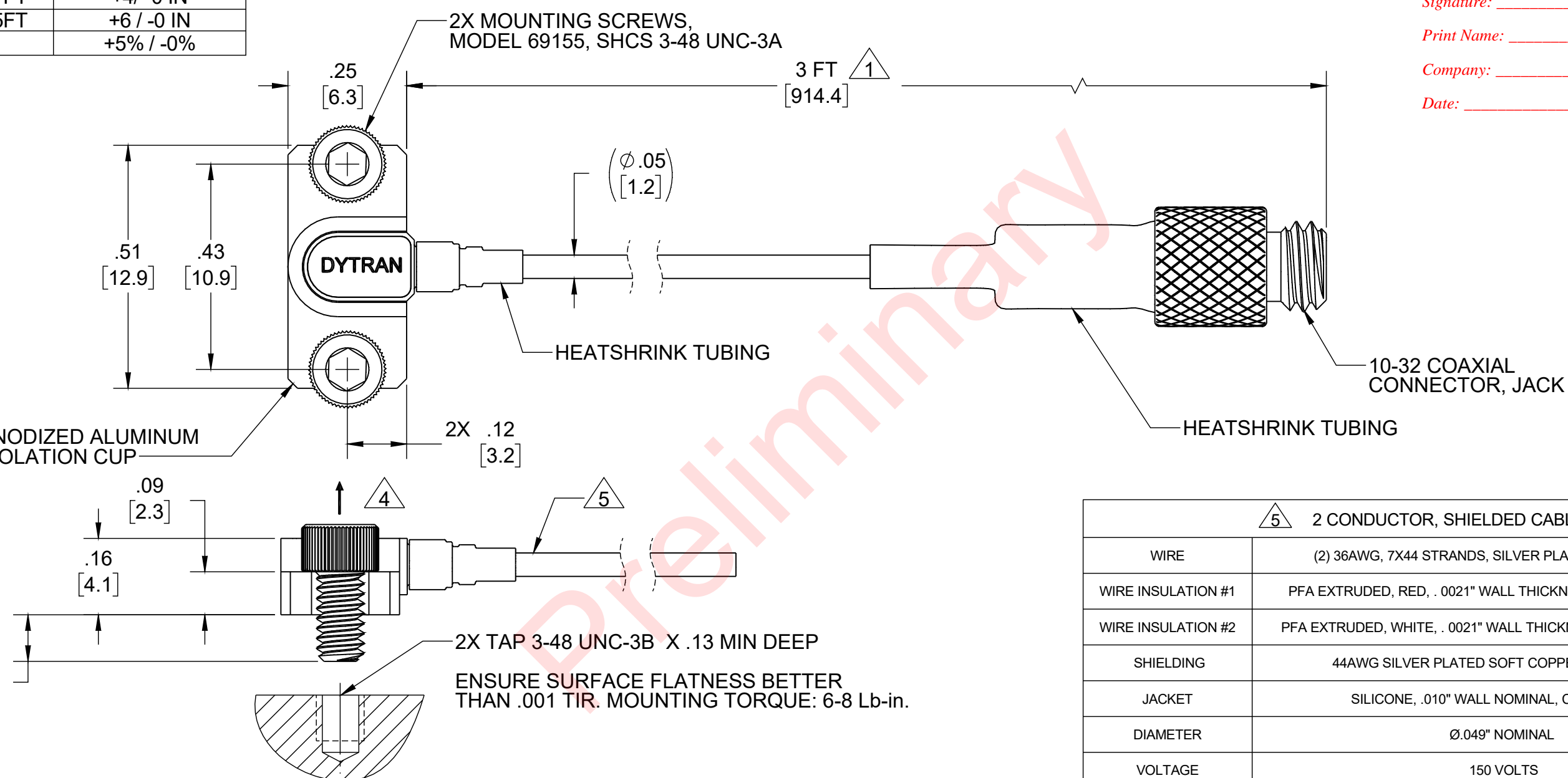
REVISIONS

REV.	ECN	DESCRIPTION	BY/DATE	CHK	APPR
X1	-	PRELIMINARY RELEASE	NDC 05/06/22	AM	

1 CABLE LENGTH TOLERANCE

≤1FT	+1/ -0 IN
>1 FT - 5 FT	+2/ -0 IN
> 5 FT - 10 FT	+4/ -0 IN
>10 FT - 25FT	+6 / -0 IN
>25 FT	+5% / -0%

Signature: _____
 Print Name: _____
 Company: _____
 Date: _____



- 6. OPERATING TEMPERATURE: -320°F (-196°C) TO +300°F (149°C).
- 5 SEE CABLE SPECIFICATIONS TABLE.
- 4 ARROW INDICATES DIRECTION OF ACCELERATION FOR POSITIVE OUTPUT.
- 3. SENSOR AND ISOLATION CUP MASS (LESS CABLE): 0.65 GRAMS
- 2. SENSOR CASE MATERIAL: TITANIUM.
- 1 REFERENCE TABLE FOR ALLOWABLE CABLE LENGTH TOLERANCE.

UNLESS OTHERWISE SPECIFIED: INTERPRET DIM & TOL PER ASME Y14.5M - 1994. REMOVE BURRS. COUNTERSINK INTERNAL THDS 90° TO MAJOR DIA. CHAM EXT THDS 45° TO MINOR DIA. THD LENGTHS AND DEPTHS ARE FOR MIN FULL THDS. DIMENSIONS APPLY AFTER FINISHING.

ALL MACHINED SURFACES: 63/ TOTAL RUNOUT WITHIN .005. BREAK SHARP EDGES .005 TO .010. MACHINED FILLET RADII .005 TO .015. WELDING SYMBOLS PER AWS A2.4. ABBREVIATIONS PER MIL-STD-12.

UNLESS OTHERWISE SPECIFIED: DIMENSIONS ARE IN INCHES. DIMENSIONS IN BRACKETS [] ARE IN MILLIMETERS TOLERANCES ARE:

DECIMALS	METRIC	ANGLES
.XX ±.03	.X ±.08	±1°
.XXX ±.010	.XX ±0.25	

APPROVALS		DATE
ORIG	NDC	05/06/22
CHK	AM	05/18/22
APP		

DO NOT SCALE DRAWING

THIRD ANGLE PROJECTION USA

DYTRAN INSTRUMENTS, INC. Chatsworth, CA

TITLE: **OUTLINE/INSTALLATION DRAWING, MODEL 3425A1**

SIZE	CAGE CODE	DWG NO	REV
B	2W033	127-3425A1	X1

SCALE: 4:1 SHEET 1 OF 1

Model Number 3425A1	PERFORMANCE SPECIFICATIONS	DOC NO PS3425A1
IEPE ACCELEROMETER		REV X1, ECN -, 05/10/22



- MINIATURE SIZE
- FLEXIBLE INTEGRAL CABLE
- HIGH G RANGE
- QUARTZ SENSING ELEMENT
- CRYOGENIC USE

PHYSICAL
 Weight (Less Cable)
 Connector
 Mounting Provision
 Material, Housing/Connector
 Sensing Element
 Element Style

Type

ENGLISH		SI	
0.023	oz	0.65	grams
10-32 Jack		10-32 Jack	
Adhesive Mount		Adhesive Mount	
Titanium		Titanium	
Quartz		Quartz	
Planar Shear		Planar Shear	

PERFORMANCE
 Sensitivity [1]
 Range for ± 5 Volts Output
 Frequency Response, ±10%
 Resonant Frequency
 Broad Band Resolution
 Linearity [2]
 Maximum Transverse sensitivity
 Strain Sensitivity @ 250µε

0.05 - 0.14	mV/g	0.005 - 0.014	mV/m/s ²
35,000	g pk	343350	m/s ² pk
1.0 to 20,000	Hz	1.0 to 20,000	Hz
> 90	kHz	> 90	kHz
1	g RMS	9.8	m/s ² RMS
±1	% F.S.	±1	% F.S.
5	%	5	%
0.8	g/µε	7.85	m/s ² /µε

ENVIRONMENTAL
 Maximum Shock
 Temperature Range
 Seal

40,000	g pk	392,000	m/s ² pk
-320 to +300	°F	-196 to +149	°C
Epoxy		Epoxy	

ELECTRICAL
 Supply Current Range [3]
 Compliance Voltage Range
 Output Impedance, Typ
 Bias Voltage
 Discharge Time Constant
 Case Isolation, Min.

2 to 20	mA	2 to 20	mA
+18 to +30	Volts	+18 to +30	Volts
100	Ω	100	Ω
+7 to +9	VDC	+7 to +9	VDC
0.5 to 4.0	Sec	0.5 to 4.0	Sec
10	GΩ	10	GΩ

Signature: _____

Print Name: _____

Company: _____

Date: _____

This family also includes:

Model	Sensitivity (mV/g)	Range (g pk)	Time Constant (Sec)	Operating Temp (°F)

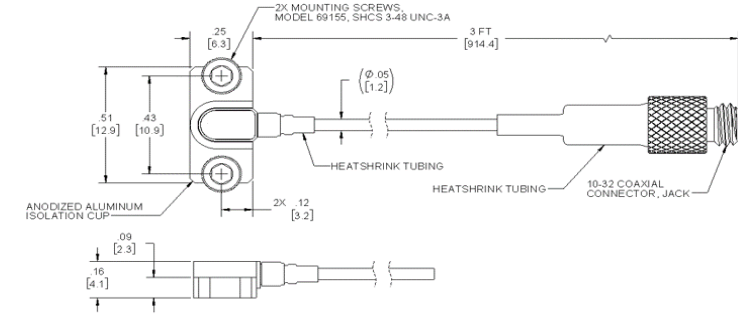
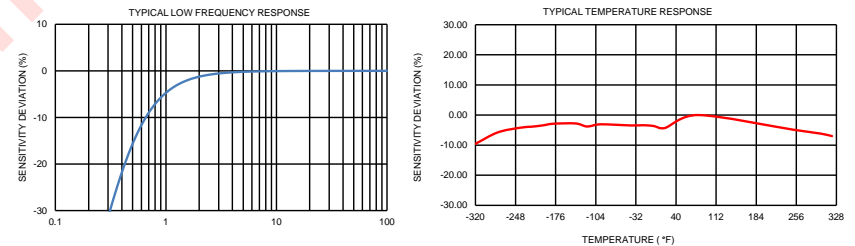
Refer to the performance specifications of the products in this family for detailed description

Supplied Accessories:

- 1) Accredited calibration certificate (ISO 17025)

Notes:

- [1] All specifications are at room temperature unless otherwise specified.
 - [2] Measure using zero-based straight line method, % of F.S. or any lesser range.
 - [3] Do not apply power to this system without current limiting, 20 mA MAX. To do so will destroy the IC charge amplifier.
 - [4] In the interest of constant product improvement, we reserve the right to change specifications without notice. □
- It is the customer's responsibility to validate that a particular product with the properties described in the product specification is suitable for use in a particular application. Parameters provided in datasheets and / or specifications may vary in different applications and performance may vary over time. All operating parameters, including typical parameters, must be validated for each customer application by the customer's technical experts.



Units on the line drawing are in inches, units in brackets are in millimeters. Refer to 127-3425A1 for more information.



21592 Marilla Street, Chatsworth, California 91311 Phone: 818.700.7818 Fax: 818.698.0362 www.dytran.com
 For permission to reprint this content, please contact info@dytran.com